



[B9 Audi A4 Transmission Mount Insert, Billet Aluminum](#)



**Supplied Parts:**

- 034Motorsport B9 Audi A4 Transmission Mount Insert

**Tools Needed:**

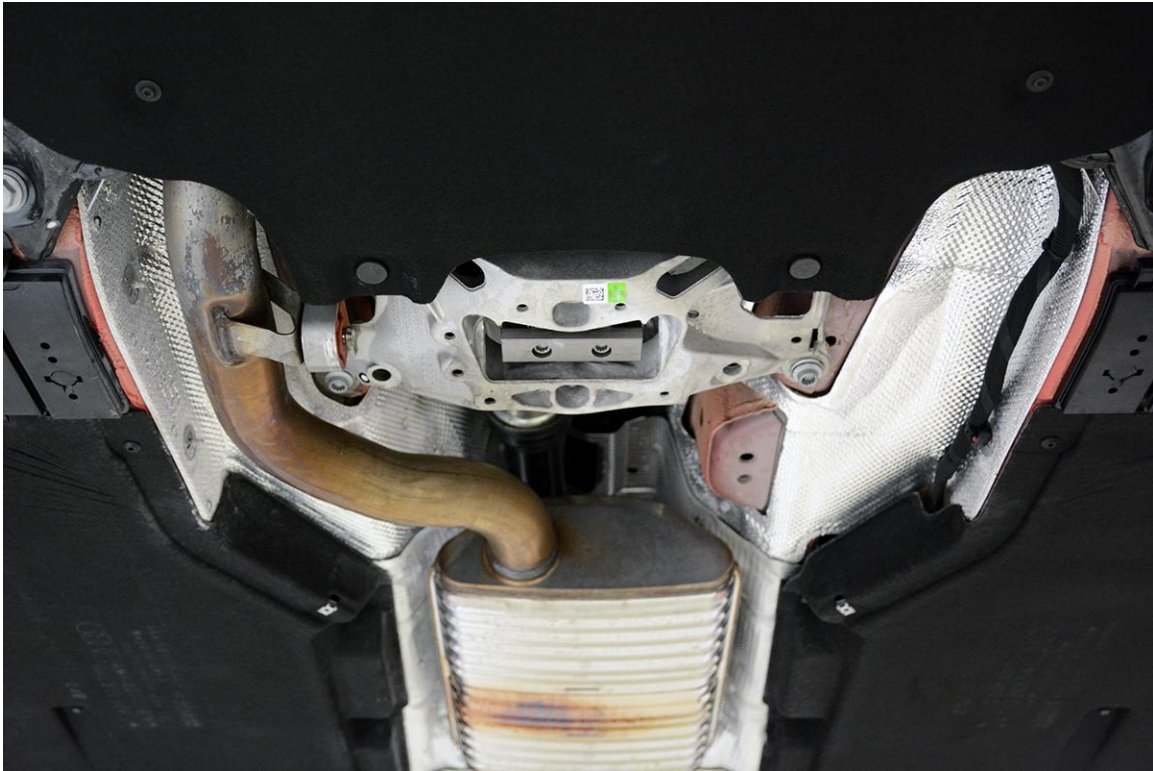
- Hands (2) (*Opposable thumbs are optional!*)
- 10mm Triple Square
- Extension
- Torque Wrench
- Silicone Grease or Spray Lubricant
- Blue Loctite

034Motorsport's Billet Aluminum Transmission Mount Insert for the B9 Audi A4 is designed to fill the large void in the factory transmission mount, and limit transmission movement without sacrificing ride quality or introducing any additional noise, vibration, or harshness into the cabin.

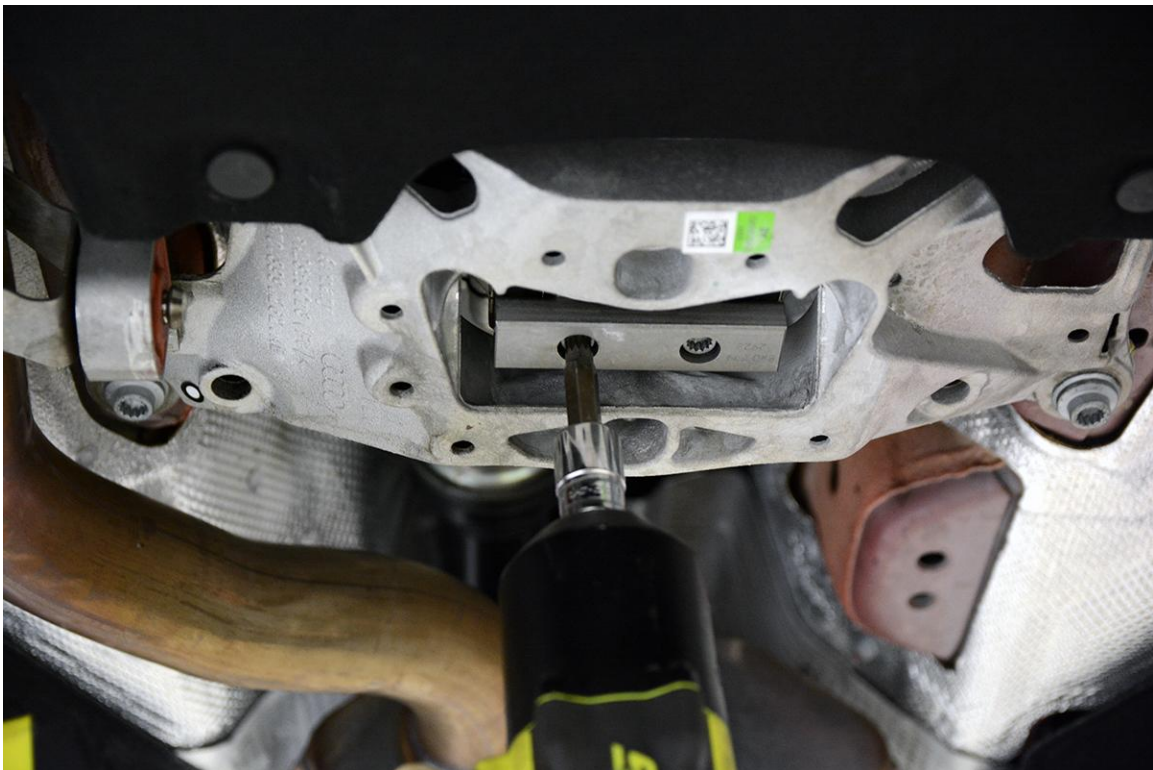
By filling the void in the factory mount, this insert eliminates the associated slop to ensure that you experience crisper shifts and a smoother driving experience.

Installation of this upgrade is a straightforward process that will take approximately thirty minutes to complete with basic hand tools.

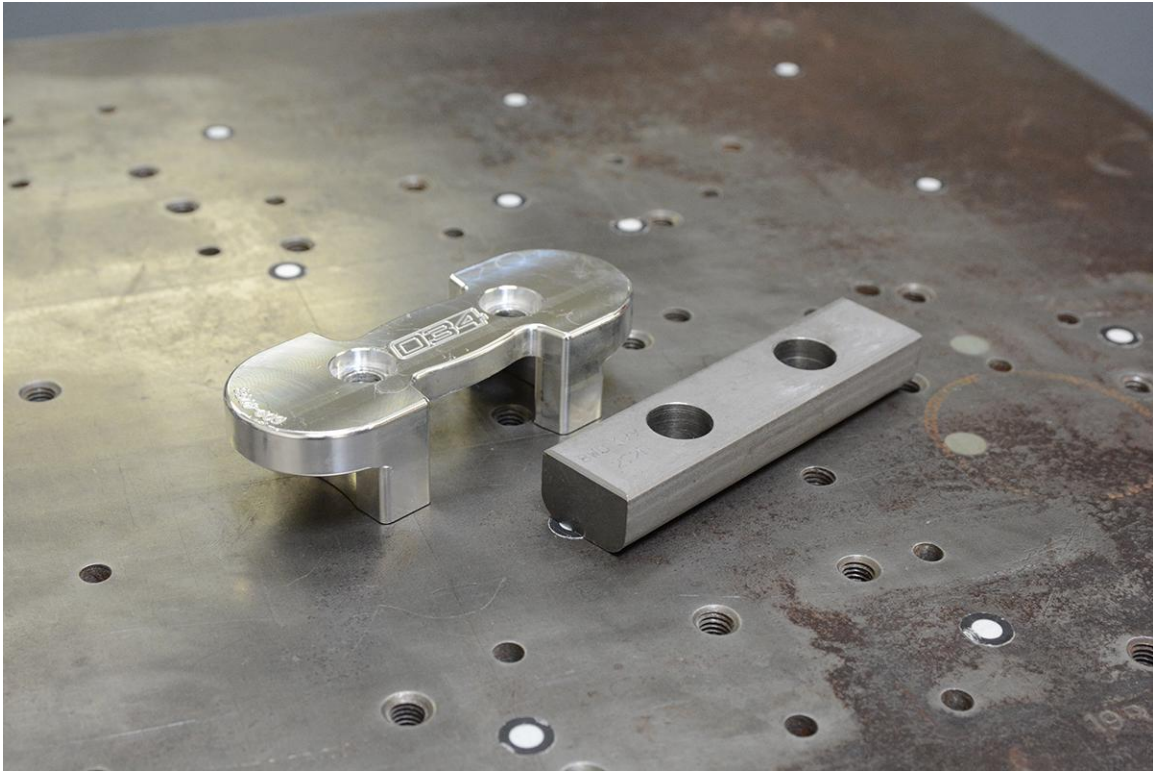
**Step 1** – Raise the vehicle securely on jackstands or a lift, in order to gain access to the factory transmission mount assembly. Make sure you have all tools necessary for installation of the Transmission Mount Insert.



**Step 2** – Using a 10mm Triple Square, remove the two M8 bolts securing the factory transmission mount bracket to the transmission mount assembly.



**Step 3** – Remove the factory transmission mount bracket from the vehicle, and compare to the 034Motorsport Billet Aluminum B9 Audi A4 Transmission Mount Insert.



**Step 4** – Apply Silicone Grease to the legs of the 034Motorsport Transmission Mount Insert and press into the factory transmission mount assembly as shown below. Apply Blue Loctite to the factory bolts before reinstalling.

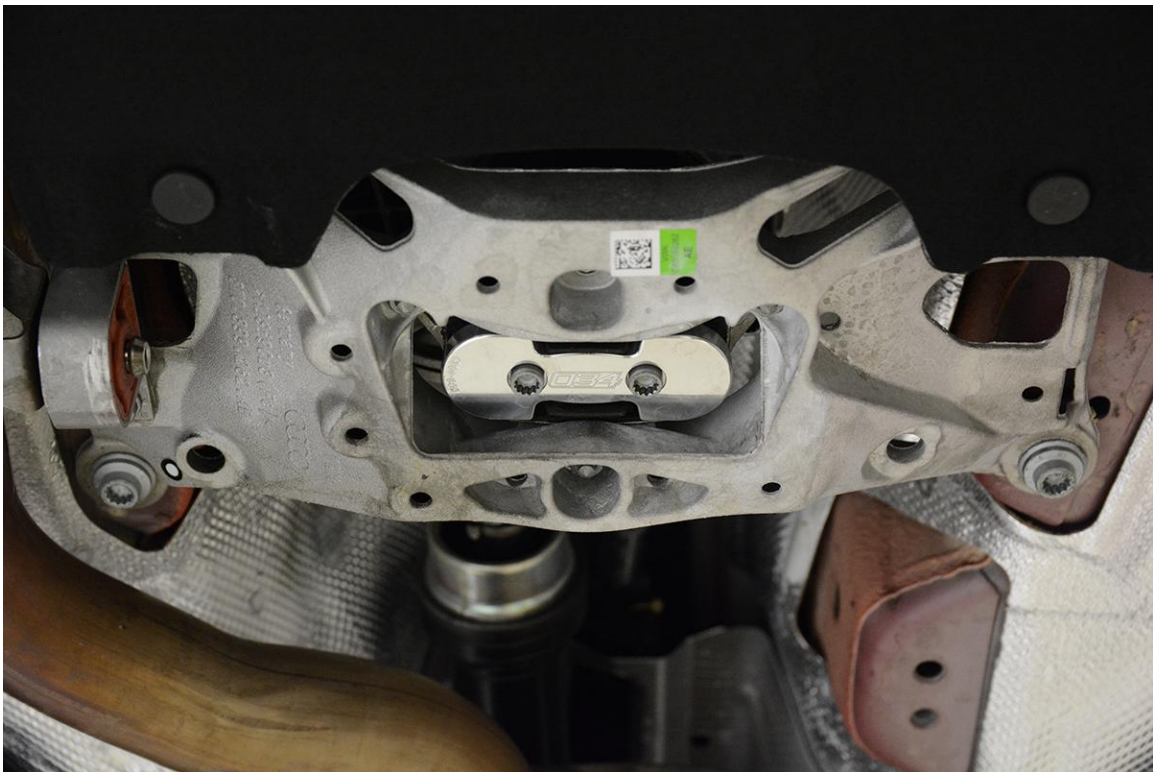




**Step 5** – Torque the factory M8 bolts to 25 Nm with Blue Loctite applied. Make sure to thread in both bolts before tightening either of them to spec to ensure that the insert is properly lined up.



**Step 6** – Marvel at your work, and give yourself a pat on the back for a job well done.



**Step 7** – Double-check the installation, and verify that everything is torqued to spec. Lower the vehicle from the lift or jackstands, and enjoy the improved shifting performance!